

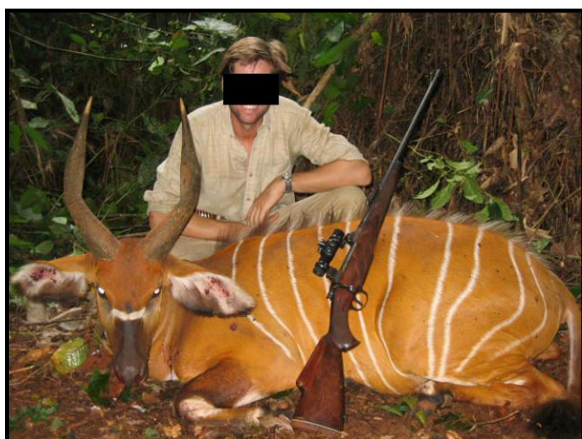
HUNT IN EUROPE.com

Your hunting specialist

- CAMEROON -

Forest Safari

April - July



The virgin forest of Cameroon is one of the most difficult hunting territories in Africa. The vegetation is practically impenetrable, the temperature goes over 30°C with 100% humidity and frequent rain. A very good physical condition is required for this hunt and there is the risk of feeling sensations of discomfort and claustrophobia. Walking is difficult while following animal tracks after the Pygmy trackers.

Rates:

16 hunting days, bongo and Sitatunga safari, per hunter	USD 35.000
16 hunting days, bongo or Sitatunga safari, per hunter	USD 30.000
16 hunting days, other large species, per hunter	USD 20.000
Big license	EUR 1.000
Small license	EUR 500
Observer, daily	USD 300

Rates include:

Assistance at the airport of arrival, transportation to the hunting area, assistance of a professional hunter, trackers and carriers, lodging in the hunting camp with full board, services of the camp staff, laundry service, first preparation of the trophies, unlimited use of 4x4 during the safari

Rates don't include:

International, national and charter flights, personal expenses, hotels before and after the safari, hunting licenses, trophy shipment (€ 1.500 - € 2.000), tips.

Trophy fees in EURO:

GROUP A		GROUP B		GROUP C	
Elephant	5.000	Giant Forest Hog	1.000	Gabon Duiker	250
Bongo	3.000	Bush Pig	500	Blue Duiker	250
Dwarf Buffalo	1.500	Peter Duiker	250	Ogliby's Duiker	250
Forest Sitatunga	2.500			Bay Duiker	250
				Black-fronted Duiker	250
				Bate's Pygmy Antelope	250

* 10% should be added on the trophy fees of conservation and development tax.

Big license: Allows for two species from group A and four species from groups B and C.

Small license: Allows for all the species from group C.

- The same license cannot be taken twice for the same area and the license is not valid twice for the same species



- All prices are based on 1 EUR = 1,25 USD exchange rate. In case the rate varies over 3% of the one stated, prices will be re-calculated based on the daily exchange rate.